

The Version 6 TempGenius Transmitter with RTD Interface has many enhancements including AC power with DC fail over, Audible / Visual annunciation, and increased onboard data logging. The HPRTD-1 / HRRTD-1 are available in several frequencies and signal powers to work with or around any existing networks. Both the High Power (HPRTD-1) and High Resolution (HRRTD-1) versions can transmit readings while mounted inside of all equipment, saving on installation costs and long-term maintenance costs. The batteries in the HPRTD-1 / HRRTD-1 are user serviceable and last 2-7 years depending on options, data resolution, and conditions. WIFI option works on existing network or as an auxiliary WIFI network.

The HPRTD's exceptional radio strength results in 11-mile unobstructed signal strength with stock antennas!

SPECIFICATIONS

TempGenius Transmitter	HPRTD-1 / HRRTD-1
Wireless Specifications	
Sensor Type	4 Wire Platinum RTD
Memory Onboard	Programmable
Frequency Options	900MHz, 923MHz, 1.2GHz / 418MHz, 433MHz, WIFI
Battery Options	3.6 Volt AA
Power Supply	5V 250MA Power Input (optional)
Antenna	RSMA wire antenna / Onboard
Transmit Power	100MW / 50MW / 16MW

Features

On Board Annunciation	Flashing LED
On Board Audible Alert	Custom Set-points
System Configuration	Retained Onboard
Alert Dispatch	Initiated by Onboard Logic
Data Type	Secure Proprietary Packet

Hardware

Dimensions	2" X 3.5" X 1.2"
Body Material	Polycarbonate Resin
Reading Temperature Range	-200 to 200Celsius
Weight	8 oz / 6 oz
Power Source Requirement	3.6V (Batteries Included)
Battery Life	2-7 Years
Warranty	1 year Limited Replacement

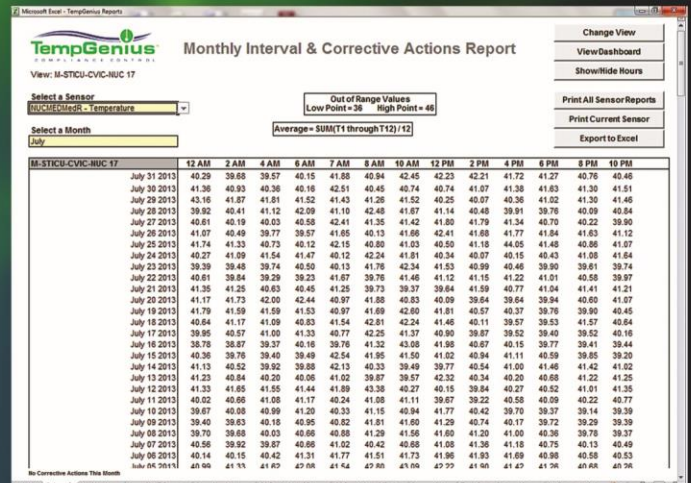


Visual Annunciator

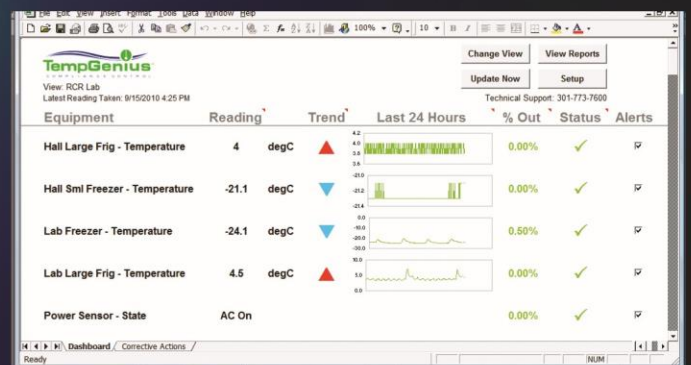
AC Power Connection



Optional Mounting Bracket



Software Creates Custom Reports



Greatly Simplify Compliance Monitoring